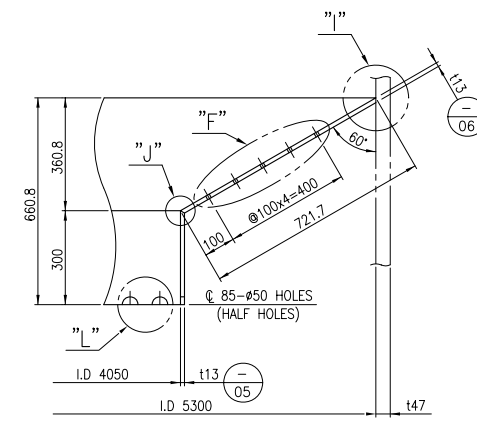
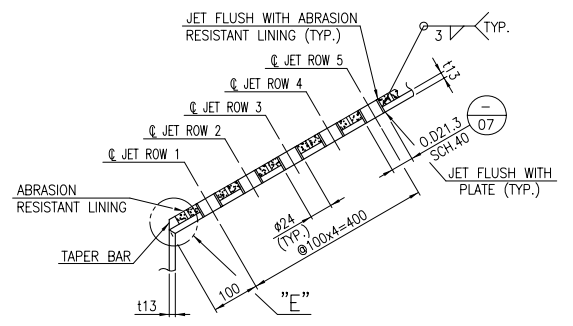


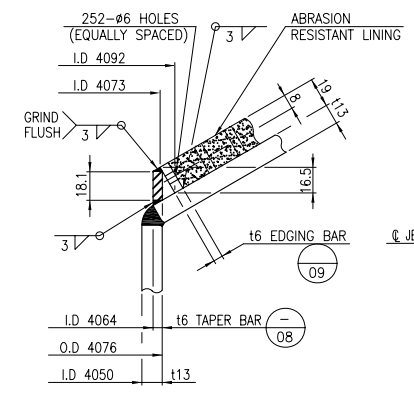
DETAIL "A"  
BAFFLE #1 ONLY  
(SEE TABLE 1)



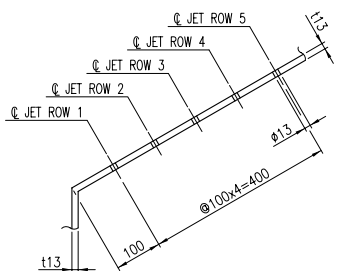
DETAIL "B"  
BAFFLE #3, #5, #7  
(SEE TABLE 1)



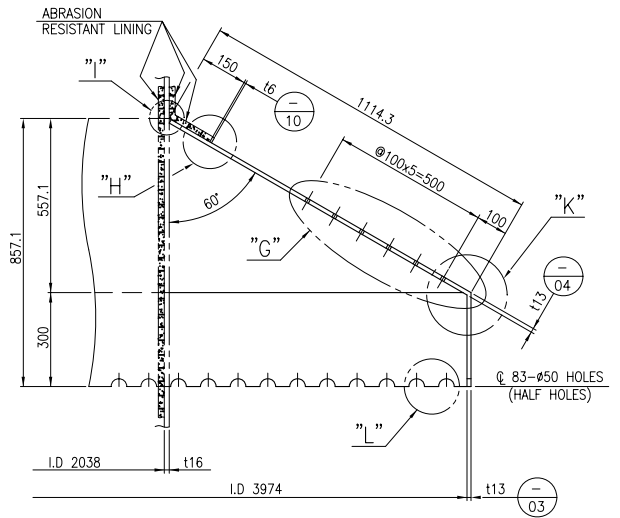
DETAIL "D"  
BAFFLE #1 ONLY  
STAGGER JETS ON ADJACENT ROWS



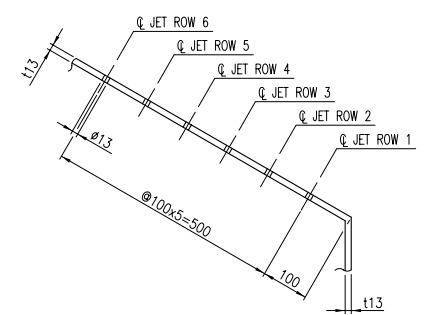
DETAIL "E"



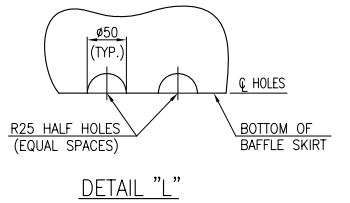
DETAIL "F"  
BAFFLE #3, #5, #7  
STAGGER JETS ON ADJACENT ROWS



DETAIL "C"  
BAFFLE #2, #4, #6  
(SEE TABLE 1)



DETAIL "G"  
BAFFLE #2, #4, #6  
STAGGER JETS ON ADJACENT ROWS



DETAIL "L"

BAFFLE NO	ROW	NO OF JETS	SIZE	NO OF HALF HOLES
1	1	128	1/2" SCH.40	85
	2	110	1/2" SCH.40	
	3	100	1/2" SCH.40	
	4	94	1/2" SCH.40	
	5	88	1/2" SCH.40	
2	1	184	ø13	83
	2	146	ø13	
	3	122	ø13	
	4	104	ø13	
	5	90	ø13	
	6	80	ø13	
3	1	176	ø13	85
	2	154	ø13	
	3	138	ø13	
	4	130	ø13	
	5	124	ø13	
4	1	172	ø13	83
	2	138	ø13	
	3	116	ø13	
	4	100	ø13	
	5	86	ø13	
	6	76	ø13	
5	1	164	ø13	85
	2	146	ø13	
	3	132	ø13	
	4	124	ø13	
	5	118	ø13	
	6	112	ø13	
6	1	162	ø13	83
	2	132	ø13	
	3	110	ø13	
	4	94	ø13	
	5	84	ø13	
	6	72	ø13	
7	1	154	ø13	85
	2	138	ø13	
	3	126	ø13	
	4	118	ø13	
	5	112	ø13	

TABLE 1

T.W = 10273.6 KG

REV.	DATE	DESCRIPTION	PREP'D	CHK'D	APP'D	AC
00	28-APR-08	ISSUED FOR APPROVAL	Y.S.JUNG	J.D.BAE	K.J.CHO	
01	10-JUL-08	REVISED AS MARKED	Y.S.JUNG	J.D.BAE	K.J.CHO	
02	08-APR-11	AS-BUILT	Y.S.JUNG	J.D.BAE	K.J.CHO	

NOTES  
 1. ALL DIMENSIONS ARE SHOWN IN MILLIMETERS UNLESS OTHERWISE NOTED.  
 2. ALL HALF HOLES AND JET HOLES SHALL BE EQUALLY SPACED.  
 3. LONGITUDINAL SEAM OF BAFFLE CONE PLATE SHOULD NOT BE INTERFERED WITH LONGITUDINAL SEAM OF STRIPPING SHELL AND INTERNAL RISER SHELL.

PART NO.	PART NAME	MATERIALS	DIMENSIONS	QTY PER SET	WEIGHT (KG)	REMARKS
10	EDGING BAR	A240-T410S	16x0.D2340.2x0.D2359.2x16.5H	1	3.5	4 SEG'T
09	EDGING BAR	A240-T410S	16x0.D4073x0.D4092x16.5H	1	11.7	4 SEG'T
08	TAPER BAR	A240-T410S	16x18.1x12786.3	1	11.0	4 SEG'T
07	PIPE	A335-P11	1/2" SCH.40-32L	520	21.4	
06	BAFFLE CONE	A387-11 CL.1	113x0.D4076x0.D5300x353.3H	3	3245.0	4 SEG'T
05	BAFFLE PLATE		113x292.5x12764.3	3	1143.0	2 SEG'T
04	BAFFLE CONE		113x0.D2070x0.D3974x549.6H	3	3253.0	4 SEG'T
03	BAFFLE PLATE		113x292.5x12525.5	3	1122.0	2 SEG'T
02	BAFFLE CONE		113x0.D4076x0.D5300x353.3H	1	1082.0	4 SEG'T
01	BAFFLE PLATE	A387-11 CL.1	113x292.5x12764.3	1	381.0	2 SEG'T

BILL OF MATERIALS

NATIONAL IRANIAN OIL REFINING & DISTRIBUTION COMPANY  
 NATIONAL IRANIAN OIL  
 ENGINEERING & CONSTRUCTION CO.  
 SHAZAND ARAK REFINERY EXPANSION  
 AND UPGRADING PROJECT

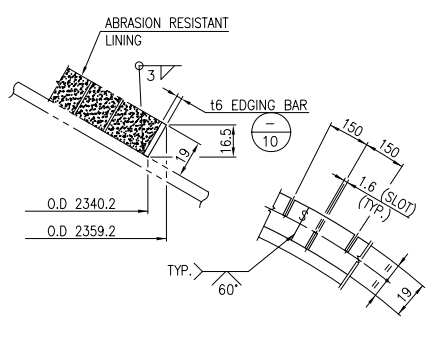
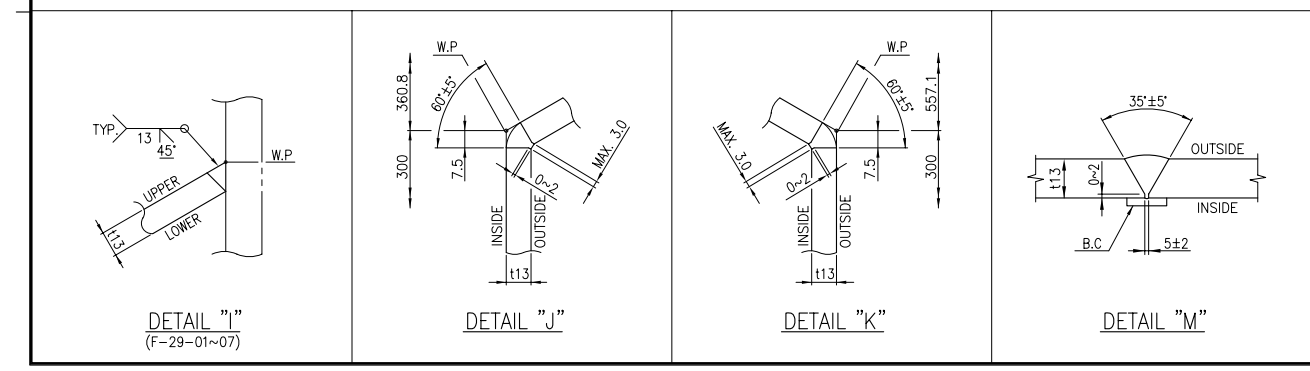


CONTRACTOR:

DRAWING TITLE:  
**R-1501 / REACTOR  
 DETAIL OF RISER BAFFLE  
 UNIT 15, RESIDUE FLUID CATALYTIC CRACKING UNIT (RFCC)**

OEC Code : 9801	Unit : 15	
Vendor Job No.: H07061	Vendor Doc No.: 01-H11AA-21-1E029	
Item No.: R-1501	Designation : (Equipment Service, if Applicable)	
NIOEC PROJ NO.: 2260	Requisition NO.: 2260-IR-ME-3-0-0201-0	

NIOEC DWG. No.: 2260-PO-ME-3-0-0201-0-DW-059-1	SIZE: A1	REV: 02	SCALE: 1/50
1. Approved (Released for Manufacturing)			
2. Approved as Noted for Fabrication (Fabrication may Proceed)			
3. Approved as Noted for Re-Issue (Fabrication shall not Proceed)			
4. Rejected			
5. Not Returned			
Date :	Sign :		



DETAIL "H"  
(ONLY FOR BAFFLE #2)